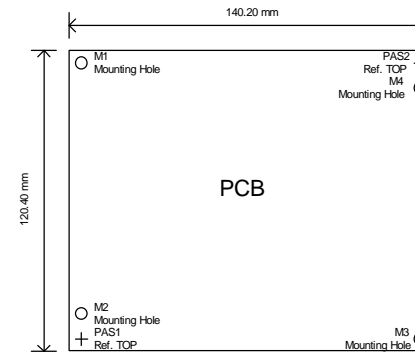
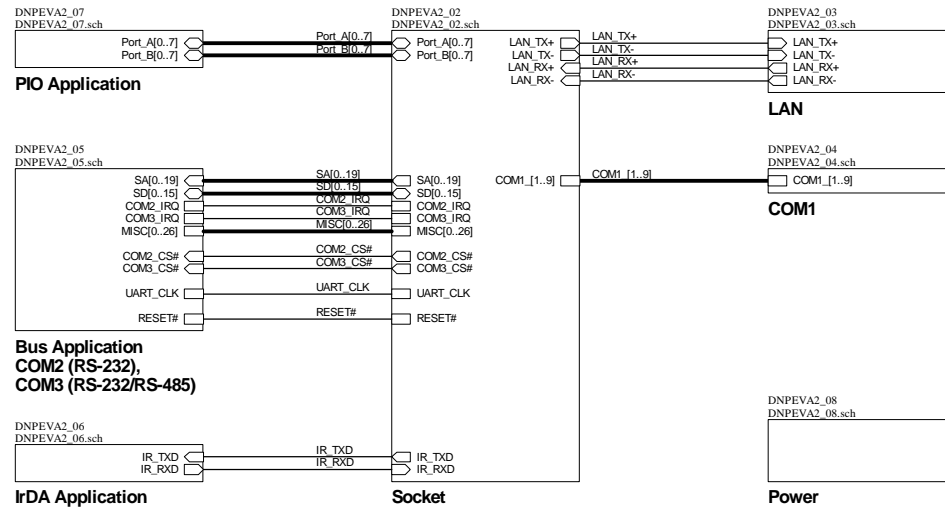


Basisboard for DIL/NetPC DNP/EVA2 Rev. 1.1



Anmerkung für den ADNP:
Um den ADNP im Remote Console Modus zu betreiben, muß Pin73 (#RCME) über einen 10kOhm Widerstand an Masse angeschlossen werden. Auf dem Evaluation Board des ADNP EVA2 ist dies bereits über einen Jumper realisiert.

SchBOM:RunSchBOM
Create Bill of Material

Netlist:CreateNetList
Create Netlist

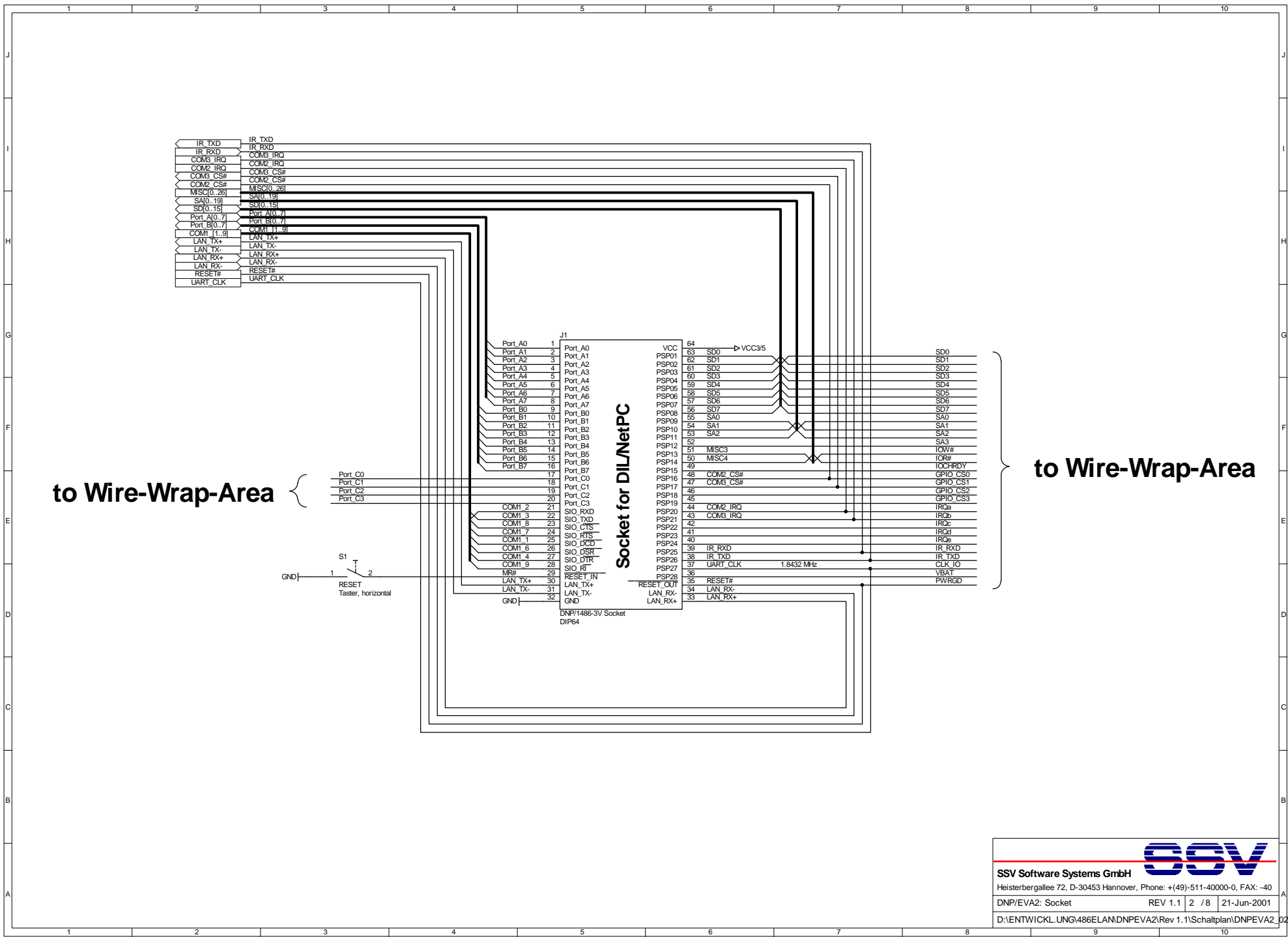
D:\ENTWICKLUNG\486ELANDNP\EVA2\Rev.1.1\Schaltplan\DNPEVA2_01.NET

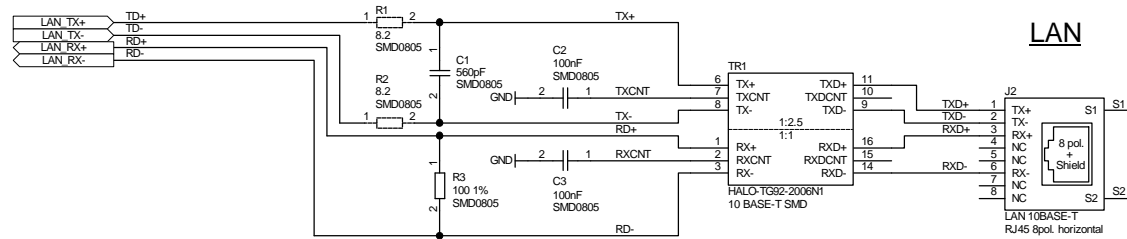
SSV

SSV Software Systems GmbH
Heisterbergallee 72, D-30453 Hannover, Phone: +(49)-511-40000-0, FAX: -40

DNP/EVA2: Root	REV 1.1	1 / 8	21-Jun-2001
----------------	---------	-------	-------------

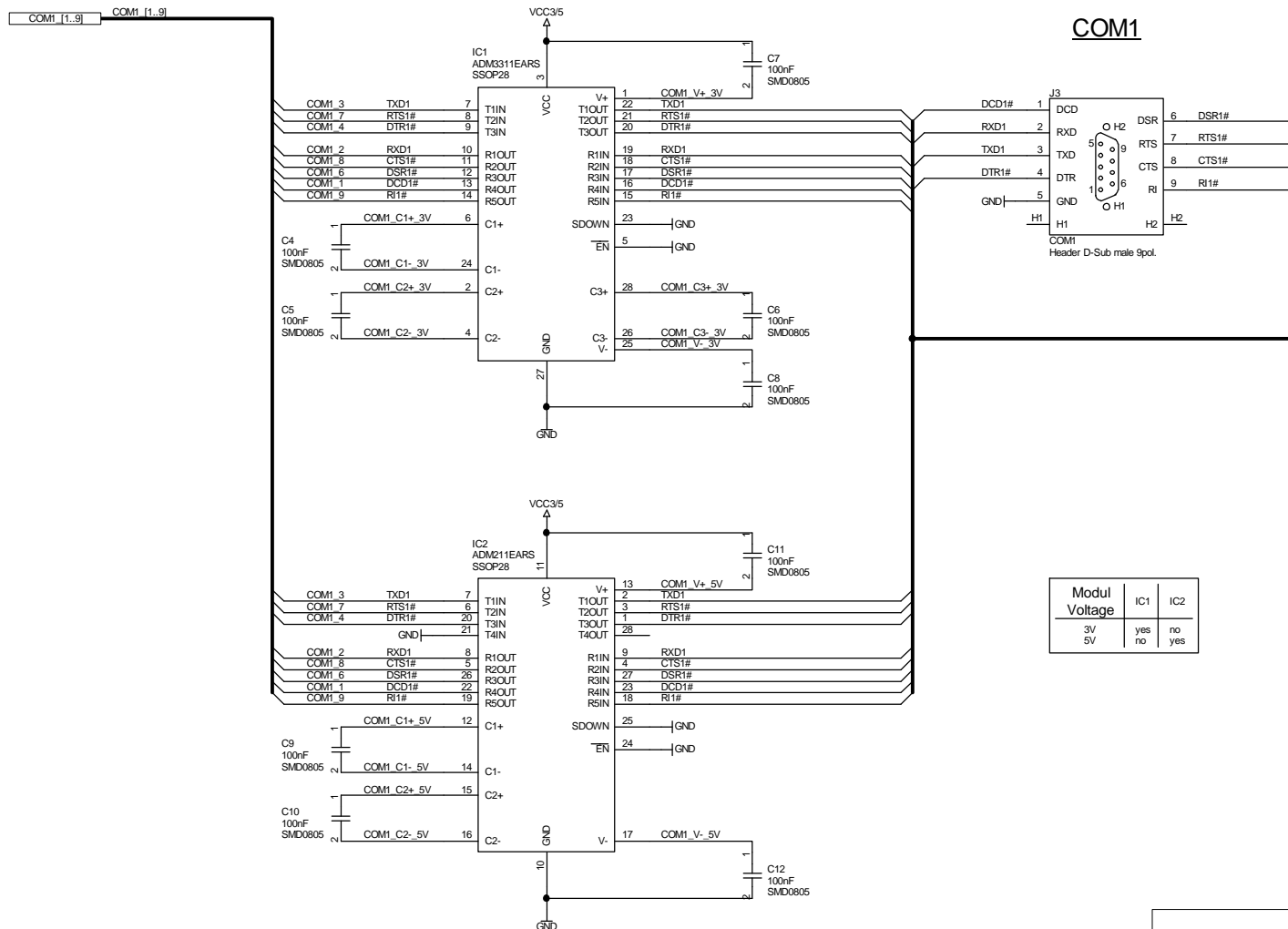
D:\ENTWICKLUNG\486ELANDNP\EVA2\Rev.1.1\Schaltplan\DNPEVA2_01.sch





LAN

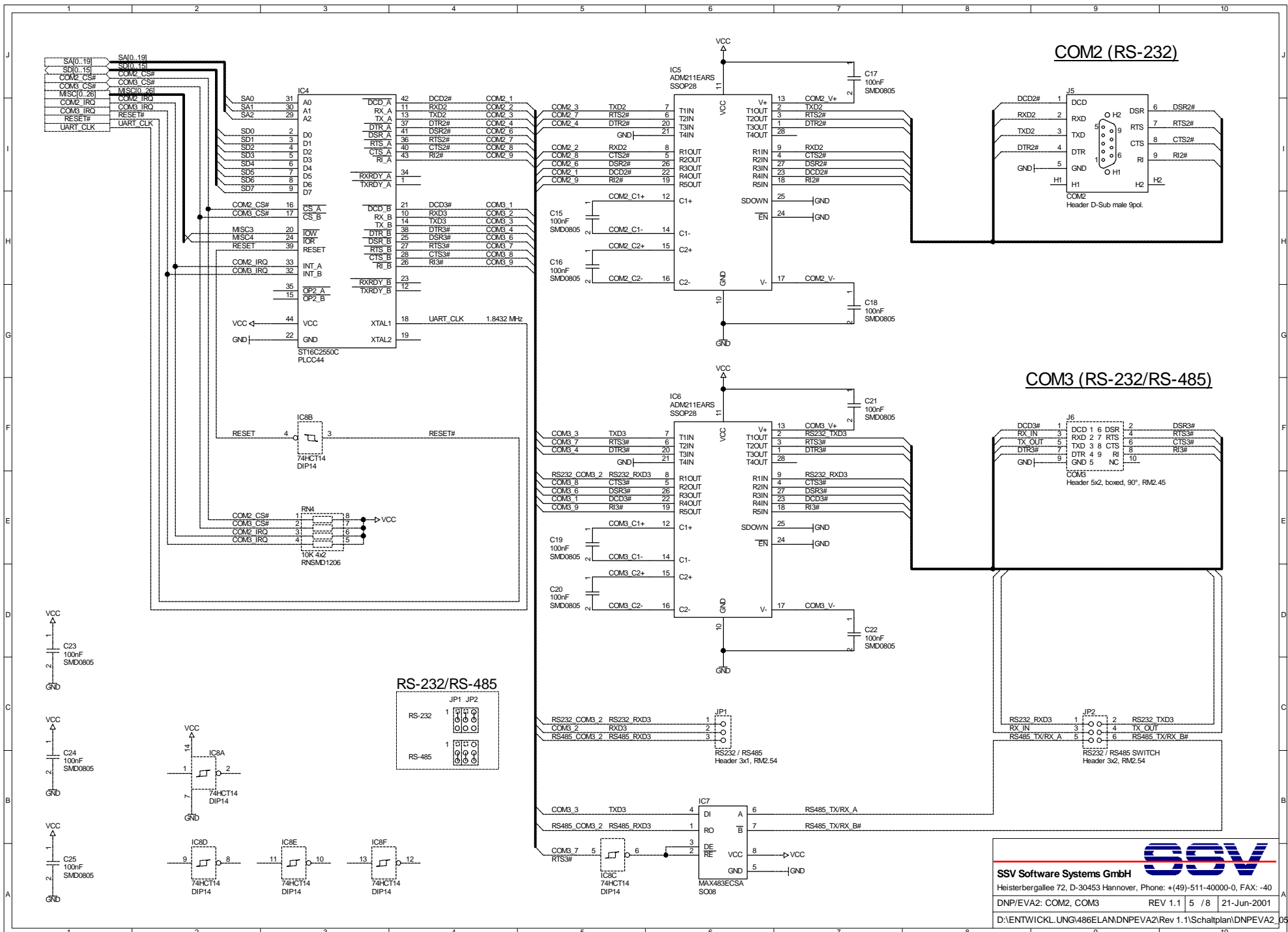
SSV	
SSV Software Systems GmbH	
Heisterbergallee 72, D-30453 Hannover, Phone: +(49)-511-40000-0, FAX: -40	
DNP/EVA2: LAN	REV 1.1 3 / 8 21-Jun-2001
D:\ENTWICKL\UNG\486ELAND\DNPEVA2\Rev 1.1\Schaltplan\DNPEVA2_03.sch	

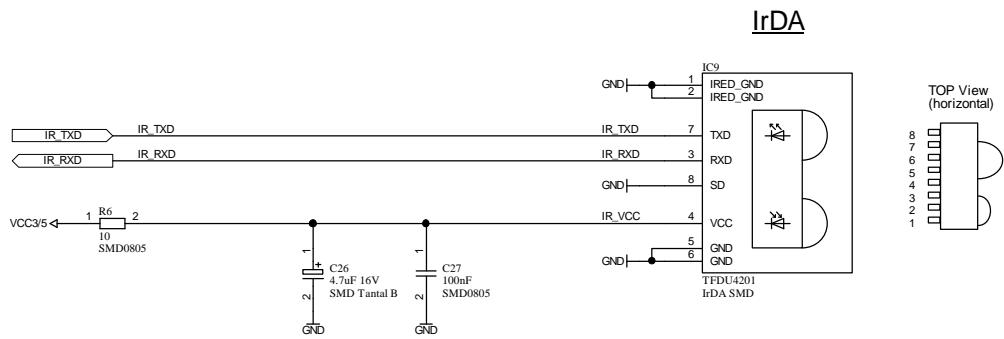


COM1

Modul Voltage	IC1	IC2
3V	yes	no
5V	no	yes

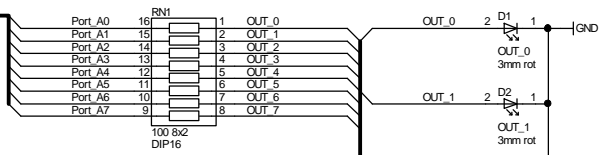
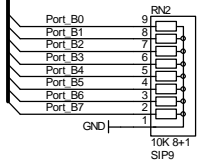
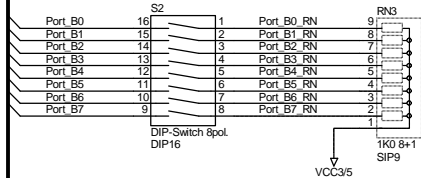
SSV
SSV Software Systems GmbH
 Heisterbergallee 72, D-30453 Hannover, Phone: +(49)-511-40000-0, FAX: -40
 DNP/EVA2: COM1 REV 1.1 4 / 8 | 21-Jun-2001
 D:\ENTWICKL\UNG\486ELAND\DNPEVA2\Rev 1.1\Schaltplan\DNPEVA2_04.sch





Port A[0..7]
Port B[0..7]

Port A[0..7]
Port B[0..7]



Modul Voltage	RN1
3V	100 Ohm, 8x2, DIP16
5V	220 Ohm, 8x2, DIP16

INPUT

OUTPUT

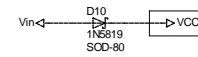
SSV

SSV Software Systems GmbH
Heisterbergallee 72, D-30453 Hannover, Phone: +(49)-511-40000-0, FAX: -40

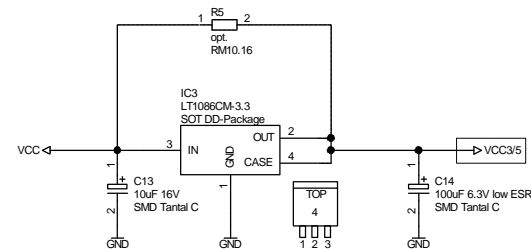
DNP/EVA2: PIO Application REV 1.1 7 / 8 21-Jun-2001

D:\ENTWICKL\UNG486ELAND\DNPEVA2\Rev 1.1\Schaltplan\DNPEVA2_07.sch

Protection Circuit



Power Generation



Modul Voltage	IC3	R5
3V	yes	no
5V	no	0 Ohm

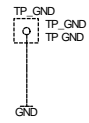
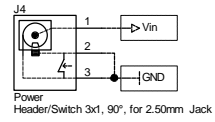
SSV			
SSV Software Systems GmbH			
Heisterbergallee 72, D-30453 Hannover, Phone: +(49)-511-40000-0, FAX: -40			
DNP/EVA2: Power	REV 1.1	8 / 8	21-Jun-2001

D:\ENTWICKL.UNG\486ELAND\DNPEVA2\Rev 1.1\Schaltplan\DNPEVA2_08.sch

Power IN

Important

Vin must not exceed 5.25V



Power LED

