

How to install the DNP/9200 Router Application Kit (RAK) Firmware

Together with the DNP/EVA12 evaluation board, the DIL/NetPC DNP/9200 with Linux kernel 2.6 is useable as an industrial router between an Ethernet LAN and the analogue/ISDN/GSM telephone network. The Router Application Kit (RAK) firmware allows very easy user configuration over a web-based interface.

- **1. Step:** Download the self-extraction install script file *dnp9200_rak.sh* to the DNP/9200 directory */flash*. Use TFTP or FTP for this job.

```

Telnet 192.168.0.126
- SSV Embedded Linux - Version 0.62.26
emblinux login: root
Password:
[root@emblinux /root]$cat /proc/version
Linux version 2.6.16.20-at91-ssv1 (mha@hareangle-pluto) SSV20060616 (gcc version
3.4.4) #1 Fri Jun 16 12:18:34 CEST 2006
[root@emblinux /root]$cd /flash
[root@emblinux /flash]$tftp -g -l dnp9200_rak.sh 192.168.0.1
[root@emblinux /flash]$chmod +x dnp9200_rak.sh
[root@emblinux /flash]$ls -al
drwxr-xr-x  3 root   root           0 Jan  1 12:21 .
drwxr-xr-x 18 root   root          576 Jun 16 2006 ..
-rwxr-xr-x  1 root   root       3004291 Jan  1 12:23 dnp9200_rak.sh
[root@emblinux /flash]$

```

- **2. Step:** Please run the self-extraction installs script *dnp9200_rak.sh* on your DNP/9200.

```

Telnet 192.168.0.126
emblinux login: root
Password:
[root@emblinux /root]$cat /proc/version
Linux version 2.6.16.20-at91-ssv1 (mha@hareangle-pluto) SSV20060616 (gcc version
3.4.4) #1 Fri Jun 16 12:18:34 CEST 2006
[root@emblinux /root]$cd /flash
[root@emblinux /flash]$tftp -g -l dnp9200_rak.sh 192.168.0.1
[root@emblinux /flash]$chmod +x dnp9200_rak.sh
[root@emblinux /flash]$ls -al
drwxr-xr-x  3 root   root           0 Jan  1 12:21 .
drwxr-xr-x 18 root   root          576 Jun 16 2006 ..
-rwxr-xr-x  1 root   root       3004291 Jan  1 12:23 dnp9200_rak.sh
[root@emblinux /flash]$./dnp9200_rak.sh

-----
- DNP/9200 Router Application Kit for EVA12 -
- SSV package Version 1.00 - Build 2845 -
-----

do you want to install? (y):y
Installing DNP/9200 Router Application Kit package
./rw
./rw/HWVersion
./rw/SWVersion
./rw/bin
./rw/bin/chat
./rw/bin/chpasswd
./rw/bin/cron
./rw/bin/ez-ipupdate
./rw/bin/fsck.msdos
./rw/bin/gawk

```

Don't forget to make the file *dnp9200_rak.sh* executable. Just enter the command line *chmod +x dnp9200_rak.sh* before running the self-extraction install script.

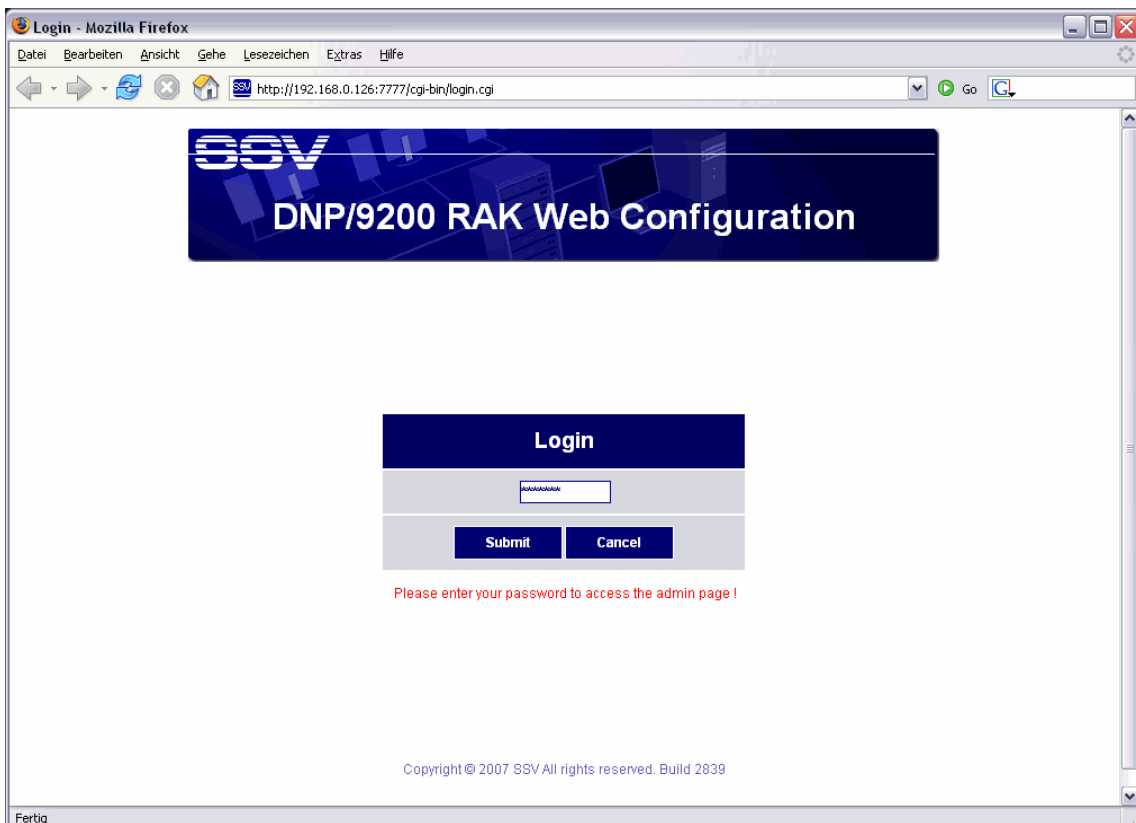
- **3. Step:** Please wait until the self-extraction install script finish. The installation needs some time for SSH key generation and other operations.

```

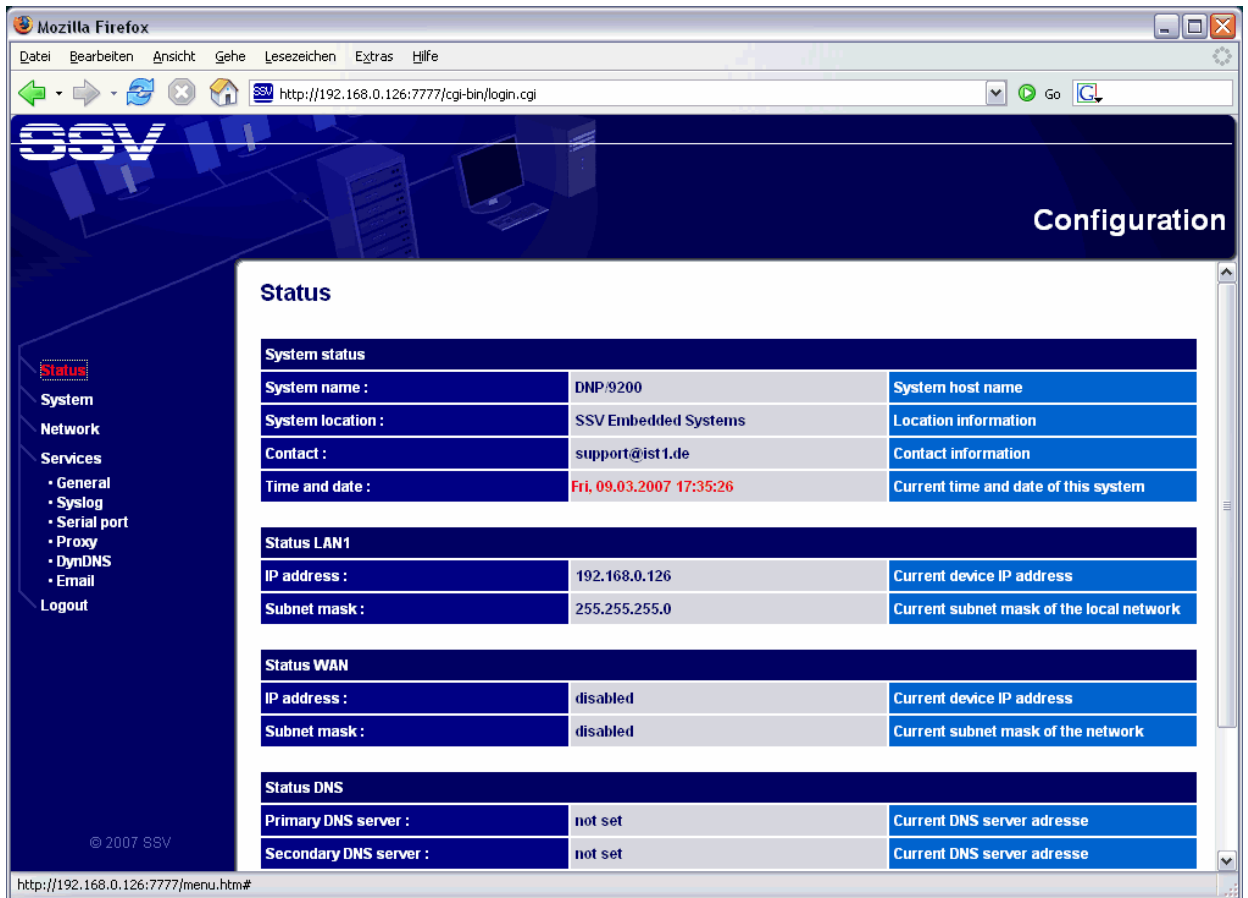
Telnet 192.168.0.126
./rw/share/zoneinfo/GMT+8.0
./rw/share/zoneinfo/GMT+9.00
./rw/share/zoneinfo/GMT-1.0
./rw/share/zoneinfo/GMT-10.00
./rw/share/zoneinfo/GMT-11.00
./rw/share/zoneinfo/GMT-12.00
./rw/share/zoneinfo/GMT-2.0
./rw/share/zoneinfo/GMT-3.00
./rw/share/zoneinfo/GMT-4.00
./rw/share/zoneinfo/GMT-4.50
./rw/share/zoneinfo/GMT-5.00
./rw/share/zoneinfo/GMT-5.50
./rw/share/zoneinfo/GMT-6.00
./rw/share/zoneinfo/GMT-7.00
./rw/share/zoneinfo/GMT-8.00
./rw/share/zoneinfo/GMT-9.00
./rw/share/zoneinfo/GMT-9.5
./flash
./flash/autoinit.sh
./flash/autostart.sh
Generating ssh keys
-----
Generating public/private rsa1 key pair.
Your identification has been saved in /rw/etc/ssh_host_key.
Your public key has been saved in /rw/etc/ssh_host_key.pub.
The key fingerprint is:
a9:9a:19:c3:82:5f:77:c8:ca:49:c4:5d:a6:43:b3:e5 root@emblinux
Generating public/private dsa key pair.
Your identification has been saved in /rw/etc/ssh_host_dsa_key.
Your public key has been saved in /rw/etc/ssh_host_dsa_key.pub.
The key fingerprint is:
90:67:82:d9:36:5f:ba:d0:03:e0:06:bf:da:c8:43 root@emblinux
Generating public/private rsa key pair.
Your identification has been saved in /rw/etc/ssh_host_rsa_key.
Your public key has been saved in /rw/etc/ssh_host_rsa_key.pub.
The key fingerprint is:
75:0d:d8:a0:a7:48:41:19:ed:55:3e:82:0f:40:69:ae root@emblinux
-----
done. - PLEASE REBOOT
[root@emblinux /flash]#

```

- **4. Step:** Please reboot your DNP/9200 after the self-extraction install script finish. Then access the web-based interface of the RAK firmware. Just enter: <http://192.168.0.126:7777> within the URL field of your web browser.



- **5. Step:** Please enter the password *dnp9200* for your login. Please use only lowercase letters within the password. The press the *Submit* button.



Please note: The RAK firmware needs a password for user logins. Please use the username *root* and the password *root* for Telnet sessions.

```

c:\ Telnet 192.168.0.126
- SSV Embedded Linux - Version 0.62.26
DNP/9200 login: root
Password:
[root@DNP/9200 /root]$pwd
/root
[root@DNP/9200 /root]$_

```

That's all.