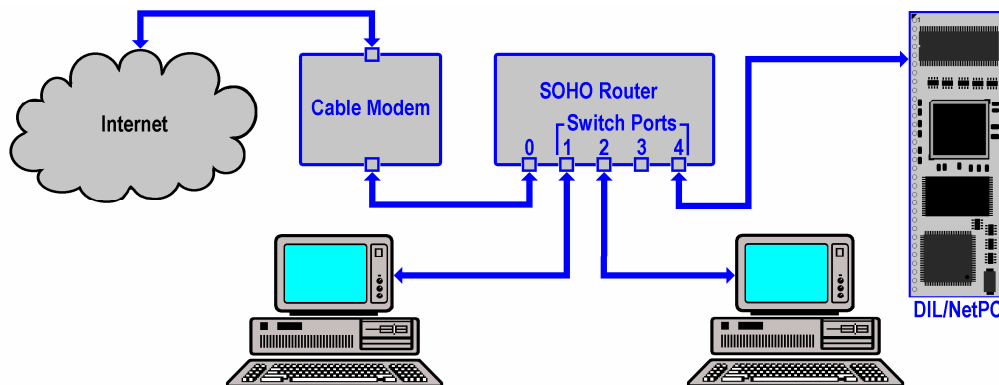


## How to connect the DIL/NetPC ADNP/9200 to the Internet

The DIL/NetPC ADNP/9200 is prepared for a connection to the Internet. The easiest way is a broadband-based Internet integration (i.e. with ADSL or similar).

- **1. Step:** Setup an infrastructure for the Internet integration. The following picture shows a sample for a small office environment. A cable modem and a SOHO router build the base. The SOHO router runs a DHCP server to deliver IP addresses to the networks members if requested.



- **2. Step:** The Ethernet LAN interface (eth0 = LAN1) of the DIL/NetPC ADNP/9200 supports DHCP-based IP address assignment. This is a build-in feature of the ADNP/9200 Linux. See *mHTA9200-06.pdf How to set the ADNP/9200 IP Address for LAN1 with DHCP* for more details.
- **3. Step:** Check the DIL/NetPC ADNP/9200 Internet connection. The following picture shows a sample. First we display the given IP address for the ADNP/9200 Ethernet LAN interface (eth0 = LAN1) with an *ifconfig* command.

```

DIL-NetPC (COM15) - HyperTerminal
Datei Bearbeiten Ansicht Anrufen Übertragung ?
[root@emlinux /root]$ifconfig eth0
eth0      Link encap:Ethernet  HWaddr 02:80:AD:20:DC:39
          inet addr:192.168.0.162  Bcast:192.168.0.255  Mask:255.255.255.0
          UP BROADCAST NOTRAILERS RUNNING MTU:1500 Metric:1
          RX packets:1781 errors:0 dropped:0 overruns:0 frame:0
          TX packets:25 errors:0 dropped:0 overruns:0 carrier:25
          collisions:0 txqueuelen:1000
          Interrupt:24 Base address:0xc000

[root@emlinux /root]$route
Kernel IP routing table
Destination Gateway      Genmask         Flags Metric Ref    Use Iface
192.168.0.0 *                255.255.255.0   U        0      0      0 eth0
default     ssv4.terminal  0.0.0.0         UG        0      0      0 eth0
[root@emlinux /root]$ping dilnetpc.com
PING dilnetpc.com (212.227.224.85): 56 data bytes
64 bytes from 212.227.224.85: icmp_seq=0 ttl=55 time=51.2 ms
64 bytes from 212.227.224.85: icmp_seq=1 ttl=55 time=89.7 ms
64 bytes from 212.227.224.85: icmp_seq=2 ttl=55 time=51.5 ms

--- dilnetpc.com ping statistics ---
 3 packets transmitted, 3 packets received, 0% packet loss
round-trip min/avg/max = 51.2/64.1/89.7 ms
[root@emlinux /root]$_

```

Then we check the Internet connection with a *ping* command. The ADNP/9200 Linux supports DNS. You can use a *ping* with an IP address or a DNS name.

**Please note:** In every boot phase the DIL/NetPC ADNP/9200 tries to get an IP address from a DHCP server for the LAN1 Ethernet interface. If no server is available, a timeout occurs. In this case, a static IP address is assigned to the ADNP/9200 Ethernet LAN interface (eth0 = LAN1) port.

That is all.