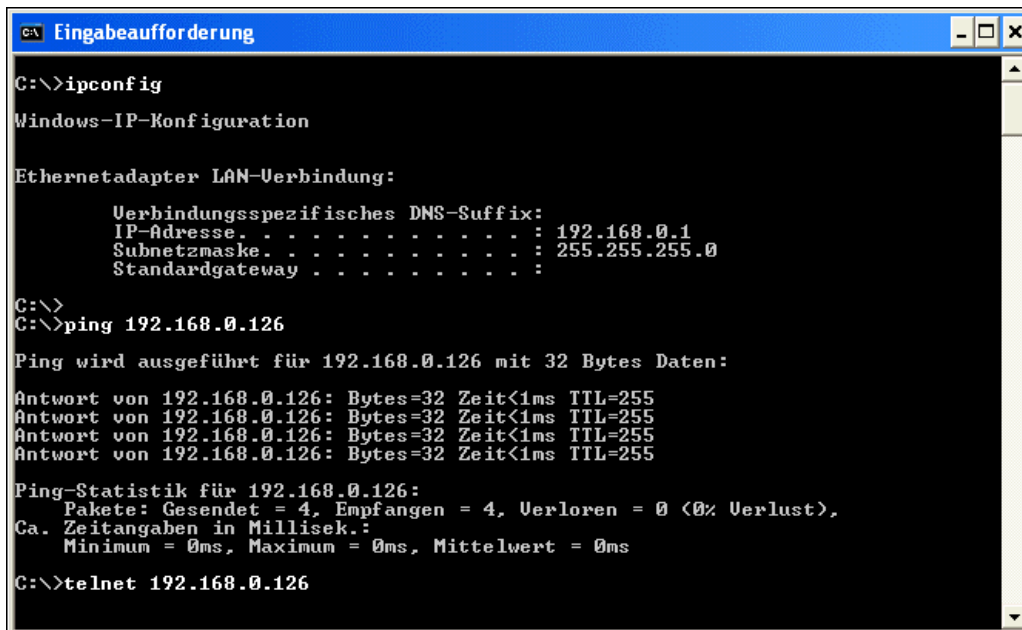


How to use a WindowsXP-based Development System

If the operating system of your PC-based development system is a Microsoft WindowsXP version, it is also possible to use Telnet and FTP. First check the Ethernet adapter installation of your PC and make sure, that the WindowsXP TCP/IP protocol stack is connected to the Ethernet adapter. Then check the IP address, **192.168.0.1** will be fine for the first time.

- **1. Step:** Check the TCP/IP connection between your WindowsXP-based PC and the Linux-based DIL/NetPC. Then establish a Telnet session.



```
C:\>ipconfig
Windows-IP-Konfiguration

Ethernetadapter LAN-Verbindung:

    Verbindungsspezifisches DNS-Suffix:
    IP-Adresse. . . . . : 192.168.0.1
    Subnetzmaske. . . . . : 255.255.255.0
    Standardgateway . . . . . :

C:\>
C:\>ping 192.168.0.126

Ping wird ausgeführt für 192.168.0.126 mit 32 Bytes Daten:

Antwort von 192.168.0.126: Bytes=32 Zeit<1ms TTL=255
Antwort von 192.168.0.126: Bytes=32 Zeit<1ms TTL=255
Antwort von 192.168.0.126: Bytes=32 Zeit<1ms TTL=255
Antwort von 192.168.0.126: Bytes=32 Zeit<1ms TTL=255

Ping-Statistik für 192.168.0.126:
    Pakete: Gesendet = 4, Empfangen = 4, Verloren = 0 (0% Verlust),
    Ca. Zeitangaben in Millisek.:
        Minimum = 0ms, Maximum = 0ms, Mittelwert = 0ms

C:\>telnet 192.168.0.126
```

Open up a WindowsXP **MS-DOS command prompt box**. You find this feature within the menu point **accessories**. Then use

ipconfig

to verify the IP address of the PC. If the **ipconfig** command shows the right IP address (**192.168.0.1**) then you can check the TCP/IP connection to the DIL/NetPC. Use

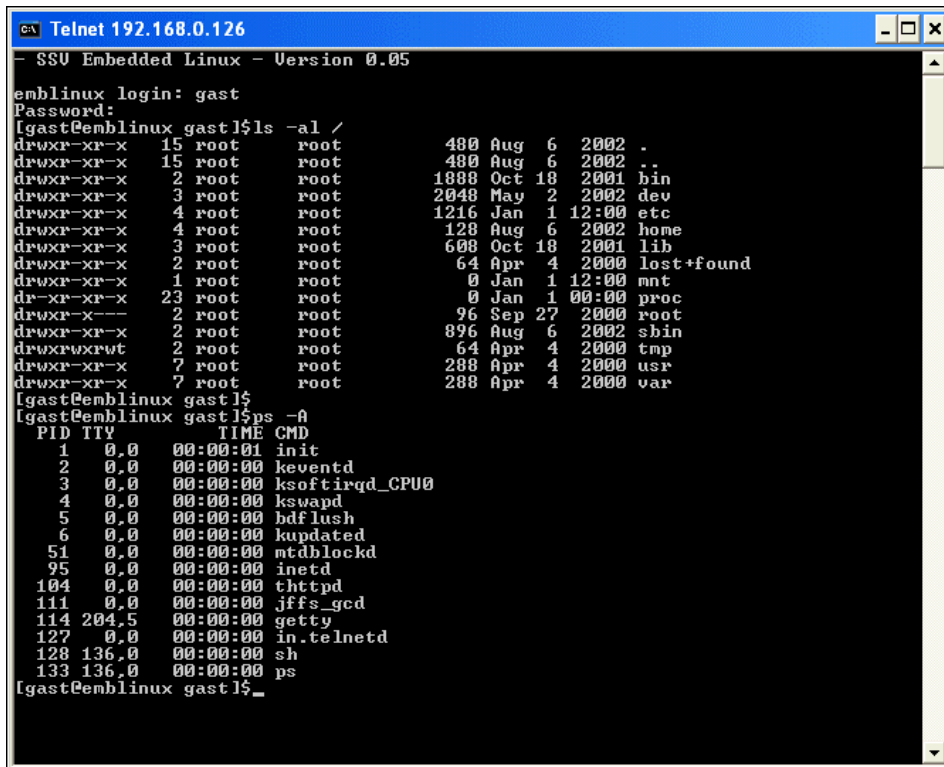
ping 192.168.0.126

for the connection check. If the connection is available, run the standard WindowsXP Telnet client program. Enter the command line

telnet 192.168.0.126

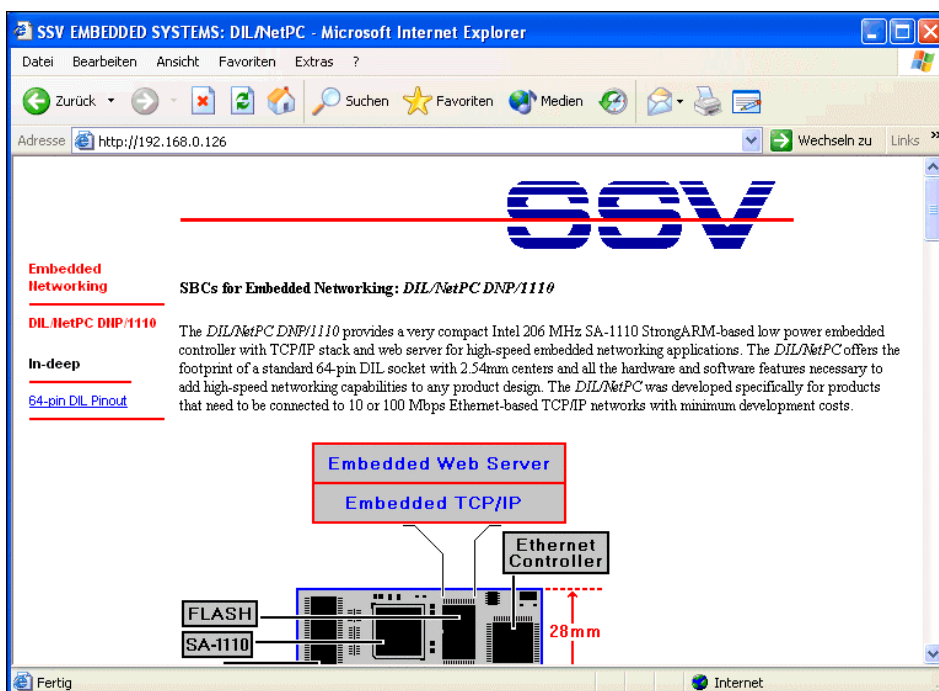
within the **MS-DOS command prompt box**. In the case of errors first check the LAN cables and then the WindowsXP TCP/IP configuration.

- **2. Step:** Use the Telnet session. There are no differences to Telnet sessions with other client programs.

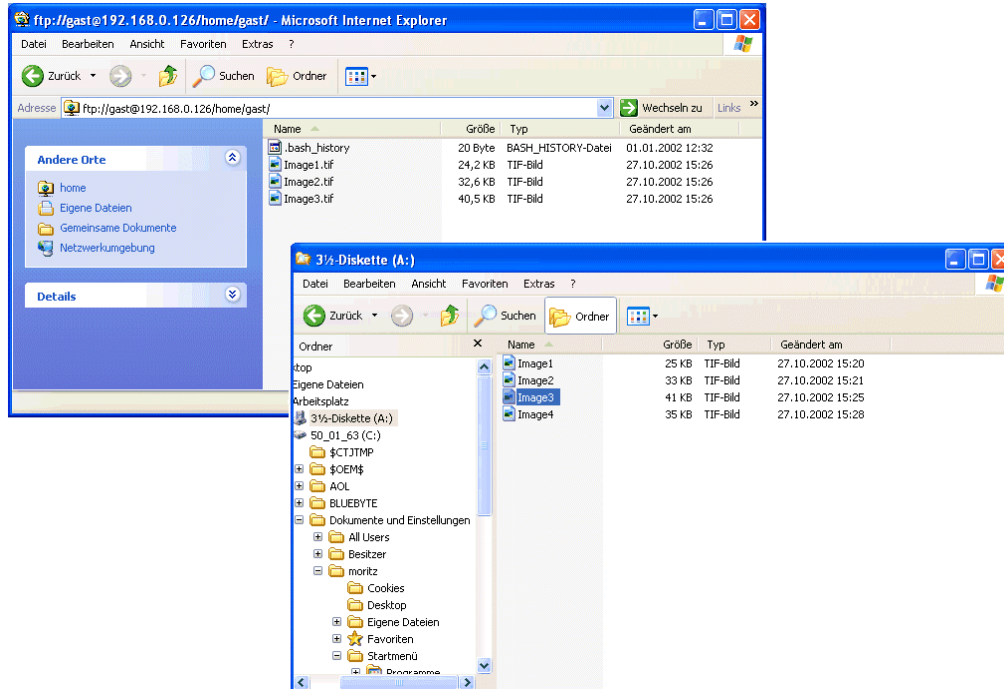


- **3. Step:** Use the WindowsXP Internet Explorer to be able to access the DIL/NetPC Web server. Enter the URL:

http://192.168.0.126



- **4. Step:** Establish a FTP session for file transfers between your development system and the DIL/NetPC.



You need a FTP client program on the PC. The WindowsXP Internet Explorer can do this job. First run the Internet Explorer with the URL:

ftp://gast@192.168.0.126/home/gast/

Then open up an Explorer window. For transferring files you can move a file with drag and drop from one window (Explorer) to the other window (Internet Explorer).